



NATIONAL CONFERENCE ON  
EDUCATION

**Foundation for Young Adult Success:  
The Critical Roles of Schools in Youth Development  
12:45 – 1:45PM**



PRESENTED BY:



# Presenters

## University of Chicago Consortium on School Research

- Jenny Nagaoka, Deputy Director
- Camille Farrington, Senior Research Associate

## Broward County Public Schools

- Robert Runcie, Superintendent



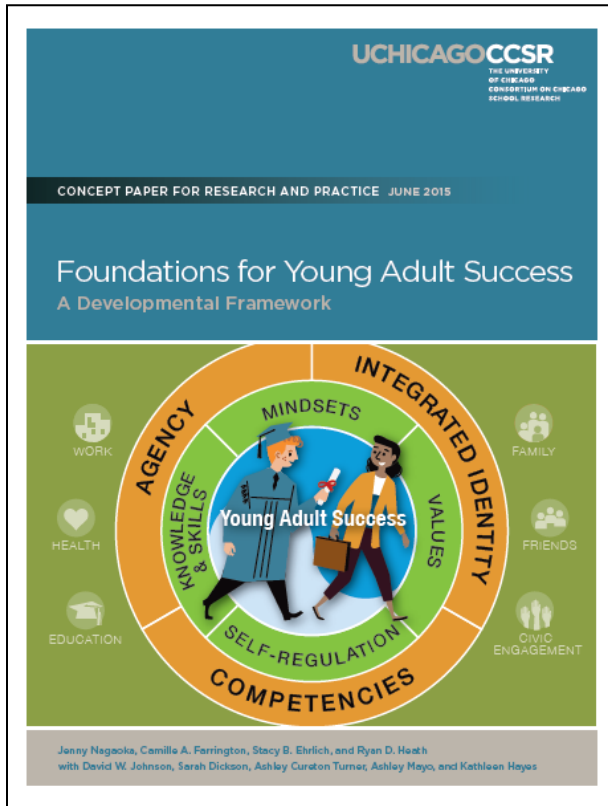
# What Do We Mean by Young Adult Success?



EDUCATION



NATIONAL CONFERENCE ON  
EDUCATION



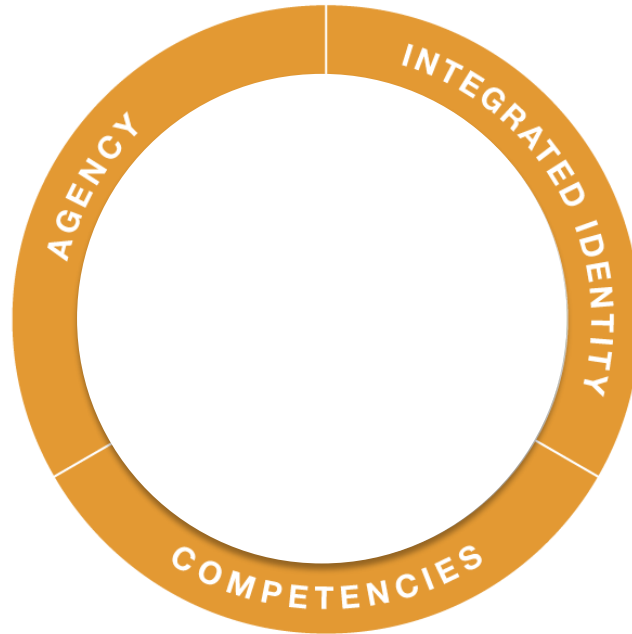
# Foundations for Young Adult Success (2015) Nagaoka, Farrington, Ehrlich, & Heath



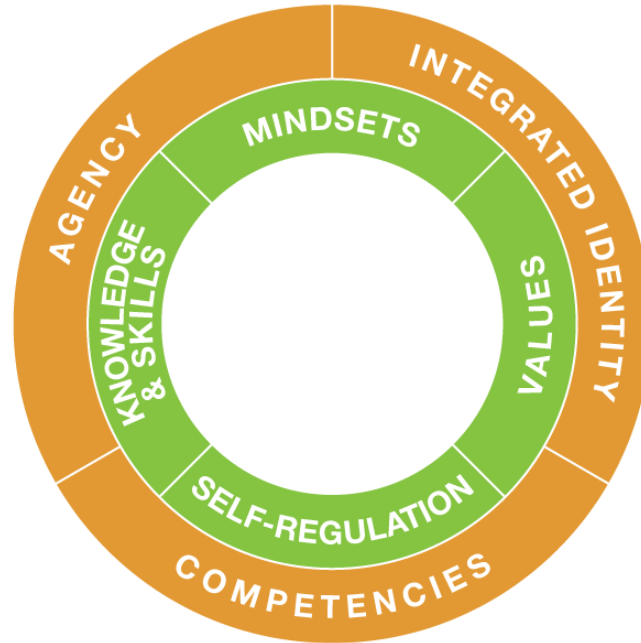
NATIONAL CONFERENCE ON  
EDUCATION



# Key Factors



# Foundational Components



NATIONAL CONFERENCE ON  
EDUCATION

# Role of Context



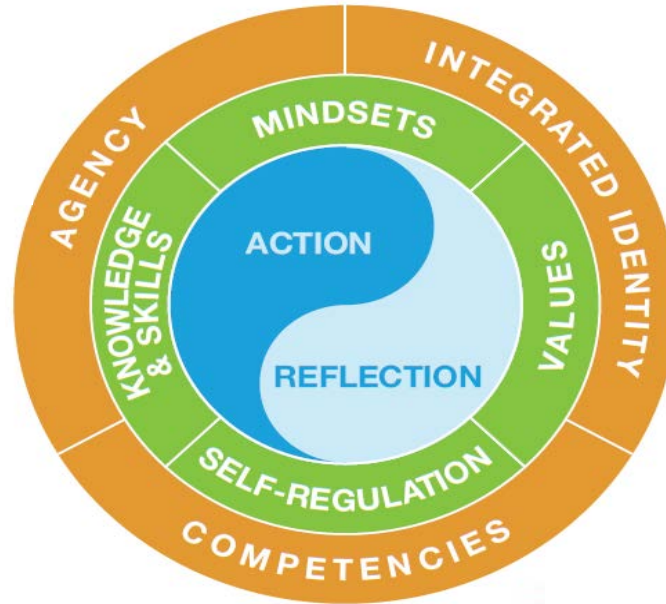
NATIONAL CONFERENCE ON  
EDUCATION

# Youth Learn and Grow through Developmental Experiences





# Foundations for Young Adult Success



NATIONAL CONFERENCE ON  
EDUCATION

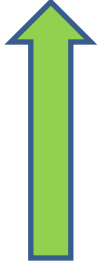
PRESENTED BY:  
  
**AASA**  
THE SCHOOL SUPERINTENDENTS ASSOCIATION

# Broward County District's work on Social and Emotional Learning

- Development of a District SEL Leadership Team
- Adopted and customized CASEL standards goals and benchmarks
- Zone Platform for Assistance and Collaboration (Z-PAC)
- LEAPS – Social Emotional Resiliency Curriculum
- FACE – Family and Community Engagement

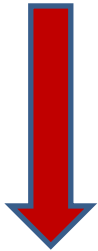


# SEL's Impact in Schools



## **Increased Academic Outcomes Documented!**

Social-emotional skills led to improved attitudes about self, others, and school and an **11 % point gain on standardized achievement tests!**



**Reduced Risk of Failure Documented!** Social Emotional Skills led to decrease in conduct problems and emotional distress!

Source: Durlak, J.A., Weissberg, R.P., Dymnicki, A.B., Taylor, R.D., & Schellinger, K. (2011) The impact of enhancing students' social and emotional learning: A meta-analysis of school-based universal interventions. *Child Development: 82 (1), 405-432.*

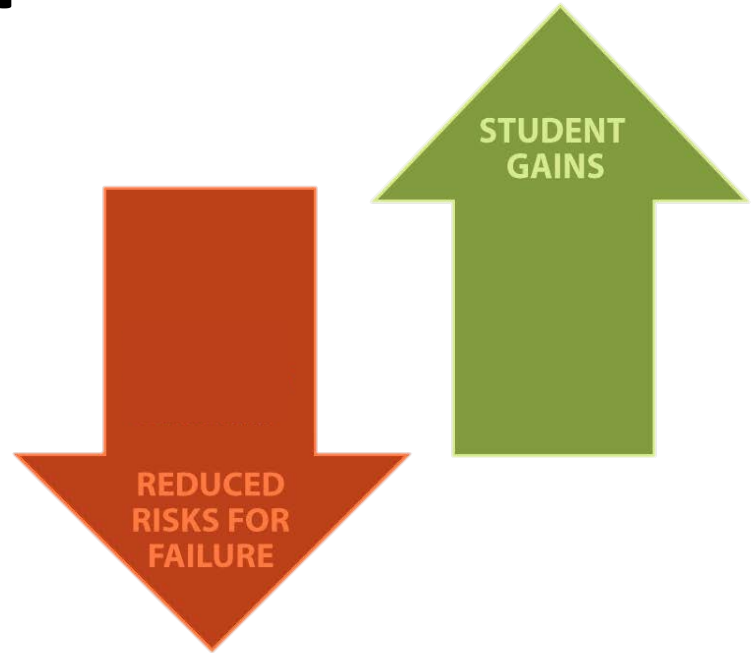
# Real World Application

- PROMISE – Preventing Recidivism through Opportunities, Mentors, Interventions, Supports and Education
  - Screening & Intervention Plan
  - Personalized Lessons/LEAPS
  - Transition Plan & Outcome Tracking
  - Results



# Real World Application

- Sunrise Middle School
  - School Culture in Transition
  - Changing Mindsets
  - School-wide PBIS Planning
    - Behavior Incentive (HERO)
    - Staffing Changes
    - Community Building
    - Addressing Overage and Disconnected Students



What are your  
**hopes and  
dreams** for  
your children  
and the  
children in your  
community?



# Q & A:

***Join in the Conversation!***



# Resources

## CONTACT INFORMATION:

Camille A. Farrington [camillef@uchicago.edu](mailto:camillef@uchicago.edu)

Jenny K. Nagaoka [jkn@uchicago.edu](mailto:jkn@uchicago.edu)

Robert Runcie [supt\\_runcie@browardschools.com](mailto:supt_runcie@browardschools.com)



# Resources

The University of Chicago Consortium on School Research

<http://ccsr.uchicago.edu/publications/foundations-young-adult-success-developmental-framework>

The Wallace Foundation

[www.wallacefoundation.org](http://www.wallacefoundation.org)

AASA, The School Superintendents Association

[www.aasa.org/content.aspx?id=10536](http://www.aasa.org/content.aspx?id=10536)





NATIONAL CONFERENCE ON  
EDUCATION

# Thank You for Your Participation!



PRESENTED BY:

